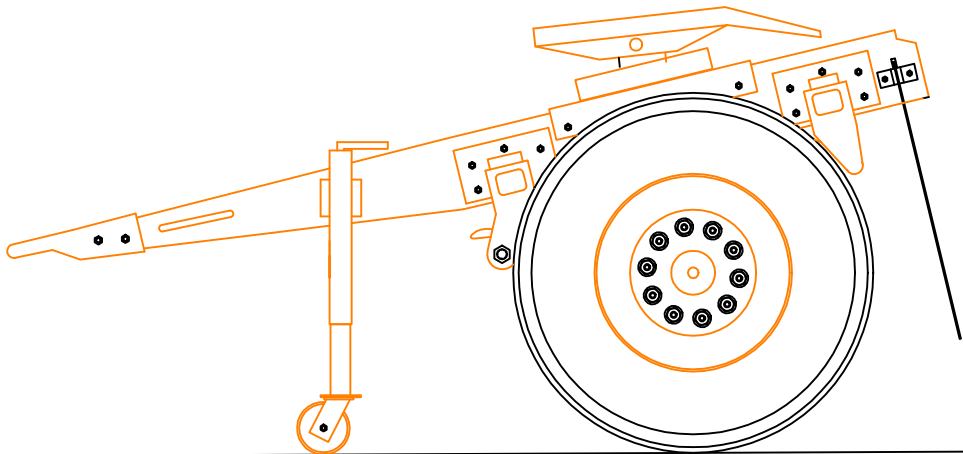
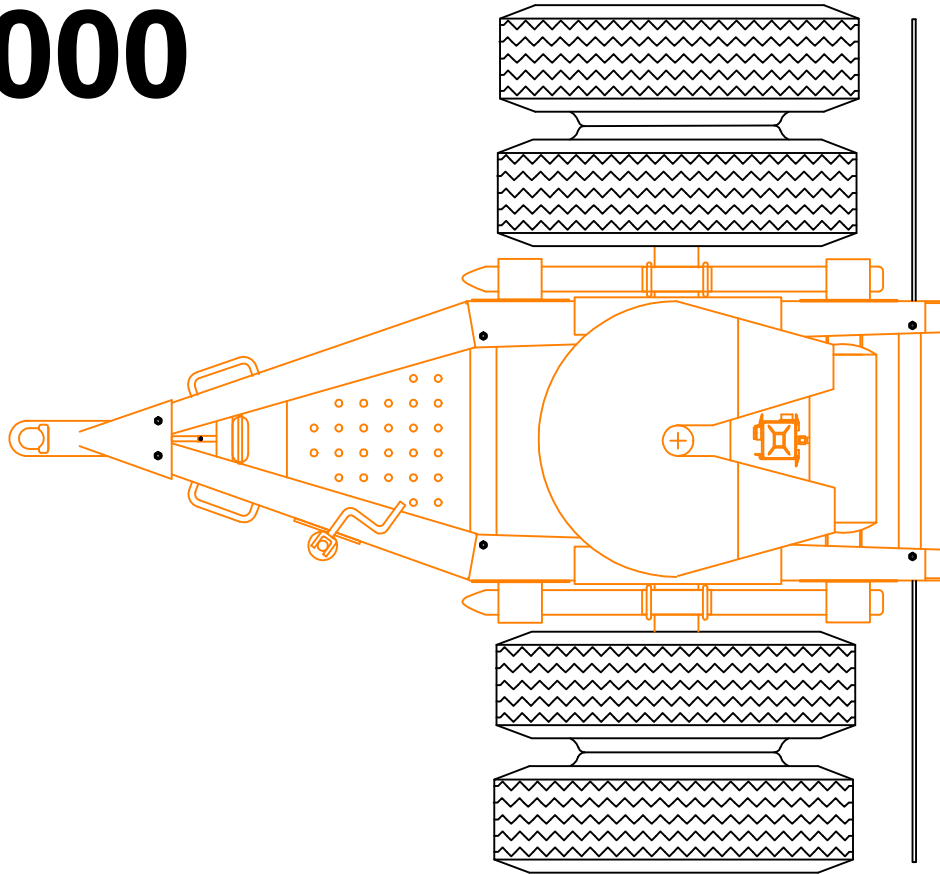


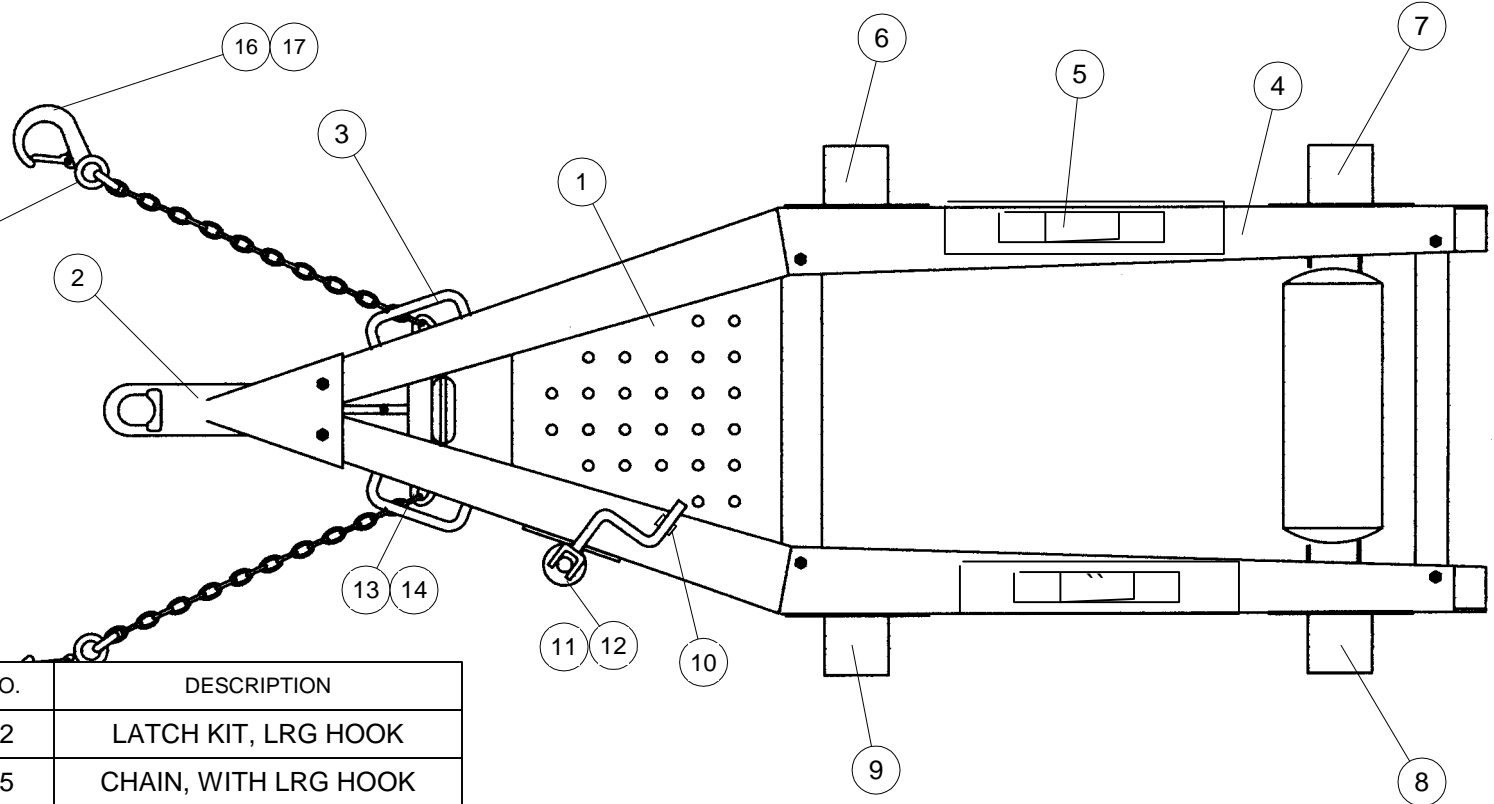
2000



ORANGE ROADWAY CONVERTER DOLLIES

KWIK LOC CORPORATION
7340 DORR STREET
TOLEDO, OHIO 43615
(419) 867-9393
(419) 867-1811 FAX
[HTTP://WWW.KWIKLOC.COM](http://www.kwikloc.com)

Chain Kit (15)
Includes:
2) Chains w/Lrg. hook
2) U-bolts
2) Back up plates
4) Lock nuts



ITEM	QTY.	PART NO.	DESCRIPTION
17	2	660522	LATCH KIT, LRG HOOK
16	2	660625	CHAIN, WITH LRG HOOK
15	1	660224	CHAIN KIT, LRG. HOOK
14	2	616217	U-BOLT BACK UP PLATE
13	2	537317	U-BOLT
12	-	SEE PG.7	KYSOR LEG, 5" RND
11	1	SEE PG.6	CRANK LEG, HOLLAND
10	1	659631	CLIP, HANDLE RETAINER
9	1	470851	HANGER ASSM. LH FWD
8	1	470821	HANGER ASSM. LH REAR
7	1	470831	HANGER ASSM. RH REAR
6	1	470841	HANGER ASSM. RH FWD
5	2	659876	5TH WHEEL FOOT W/ANGLE
4	-	SEE CHART	FRAME ASSEMBLY
3	2	650017	LIFT HANDLE
2	1	302127	EYE, ADJ. 72"
1	1	659898	BASKET

COMPLETE FRAMES	
660500	BASIC FRAME, LESS EYE, CHAINS & SUSP
660502	BASIC FRAME, W/EYE & CHAINS, LESS SUSP
660504	COMPLETE FRAME W/EYE, CHAINS & SUSP

1

FRAME OVERVIEW, RDWY CONGEAR			
KWIK LOC			
DATE		DWG NO	
SCALE		REV	
1 : 1	RL9900102	SHEET	1 OF 1

WARNING

SAFETY ALERT! (1) FOLLOW ALL TORQUE REQUIREMENTS. (2) DO NOT USE ANY COMPONENT WITH VISIBLY WORN OR DAMAGED THREADS. FAILURE TO FOLLOW THESE SAFETY ALERTS CAN LEAD TO LOSS OF VEHICLE CONTROL, PROPERTY DAMAGE, SERIOUS PERSONAL INJURY OR DEATH.

Hutchens Suspension Torque Requirements 9600-9700 Series (Decal Part Number 16086-01 Rev. G)

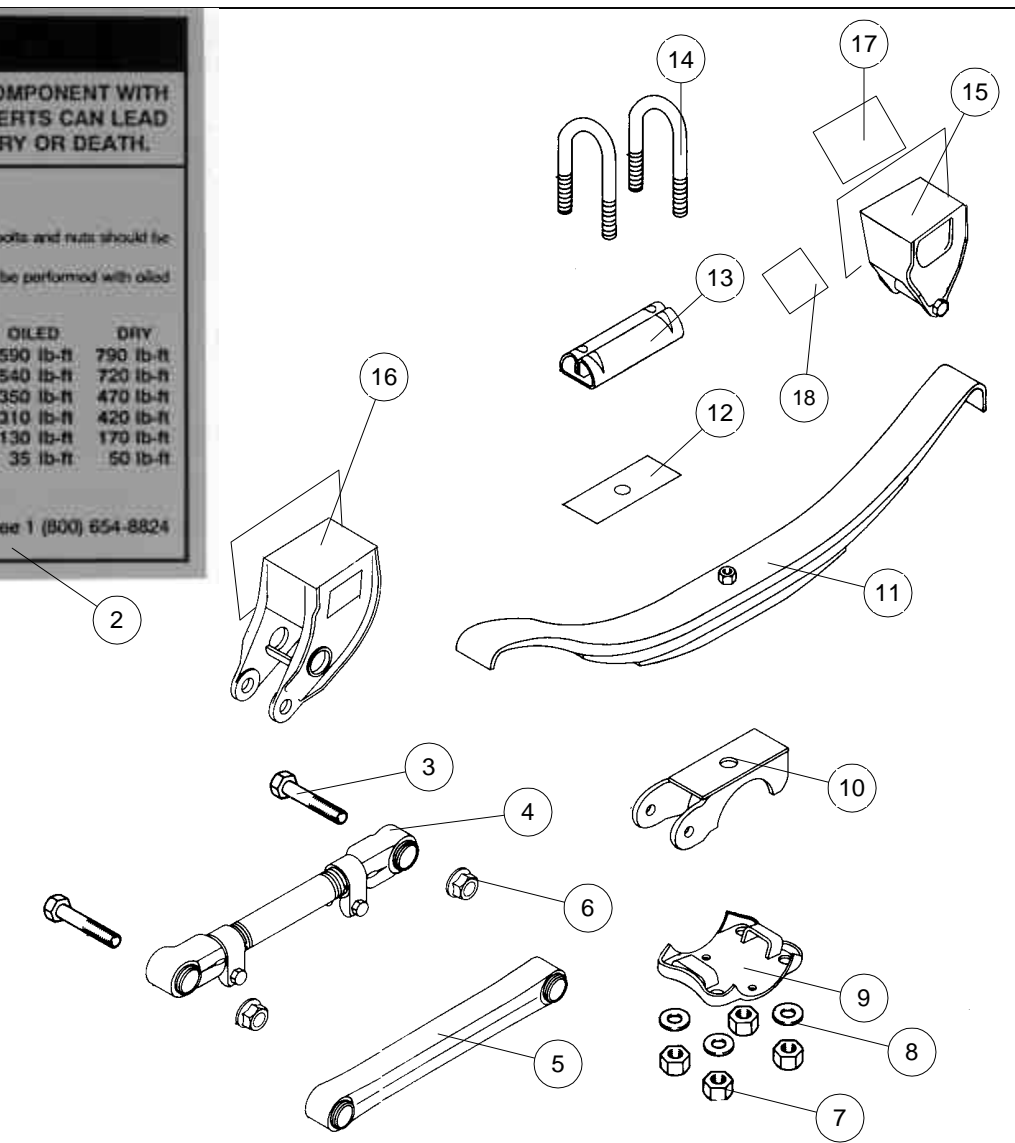
After an initial break in period, approximately 1000 miles, and at least every 4 months periodically thereafter, ALL bolts and nuts should be checked to insure that recommended torque values are being maintained.

Oiled torque values listed are for new fasteners with lubricated threads. It is recommended that new installations be performed with oiled fasteners. For dry threads which have been in service, use the higher torque values which are noted below.

	OILED	DRY
1 1/8-7 (9600 / 9700 Rocker Bolt)	590 lb-ft	790 lb-ft
1-14 or 1-8 (9700 Radius Rod Bolt)	540 lb-ft	720 lb-ft
7/8-14 (Axle U-Bolts & 9600 Radius Rod Bolt)	350 lb-ft	470 lb-ft
3/4-16 (Axle U-Bolts)	310 lb-ft	420 lb-ft
5/8-18 (Radius Rod Clamp Bolt)	130 lb-ft	170 lb-ft
5/8-18 (Spring Retainer Bolt)	35 lb-ft	50 lb-ft

HUTCHENS Hutchens Industries, Inc., P.O. Box 1427, Springfield, Missouri 65801-1427 Toll Free 1 (800) 654-8824

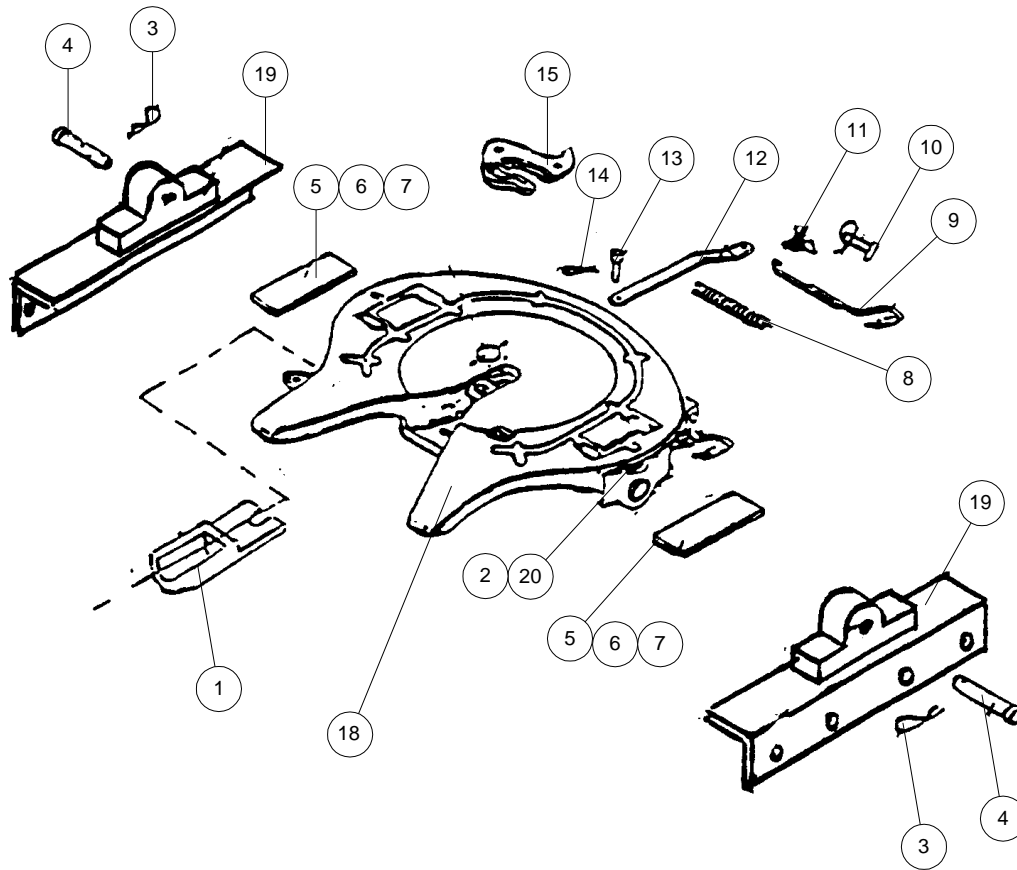
ITEM	QTY.	PART NO.	DESCRIPTION
18	4	470151	GUSSET, HANGER, LOWER
17	4	470651	GUSSET, HANGER, UPPER
16	1	470851	LH FORWARD HGR. ASSM.
-	1	470841	RH FORWARD HGR. ASSM.
15	1	470821	LH REAR HGR. ASSM.
-	1	470831	RH REAR HGR. ASSM.
14	4	660160	U-BOLT 9 1/4"
13	2	471371	TOP PLATE
12	2	471551	WEAR PAD
11	2	471522	SPRING #363 LOW ARCH
10	2	471458	SEAT 2 3/4"
9	2	471421	LOWER PLATE
8	8	471431	FLAT WASHER, U-BOLT
7	8	471441	NUT, 7/8" U-BOLT
6	4	471411	FLANGE LOCKNUT 1"
5	1	471391	TORQUE ARM, FIXED
4	1	471381	TORQUE ARM, ADJ.
3	4	471401	BOLT, TORQUE ARM
2	1		TORQUE SPEC. DECAL



2

SUSPENSION, HUTCH			
KWIK LOC			
SIZE	FSCM NO	DWG NO	REV
SCALE	1 : 1	G30018	SHEET 1 OF 1

S = SIMPLEX
 SII = SIMPLEX II
 LT = SIMPLEX LITE



SIMPLEX , SIMPLEX II AND SIMPLEX LITE
 ALL HAVE THE SAME PARTS USAGE WITH THE
 EXCEPTION OF THE TOP PLATE, BRACKET SHOES AND PADS

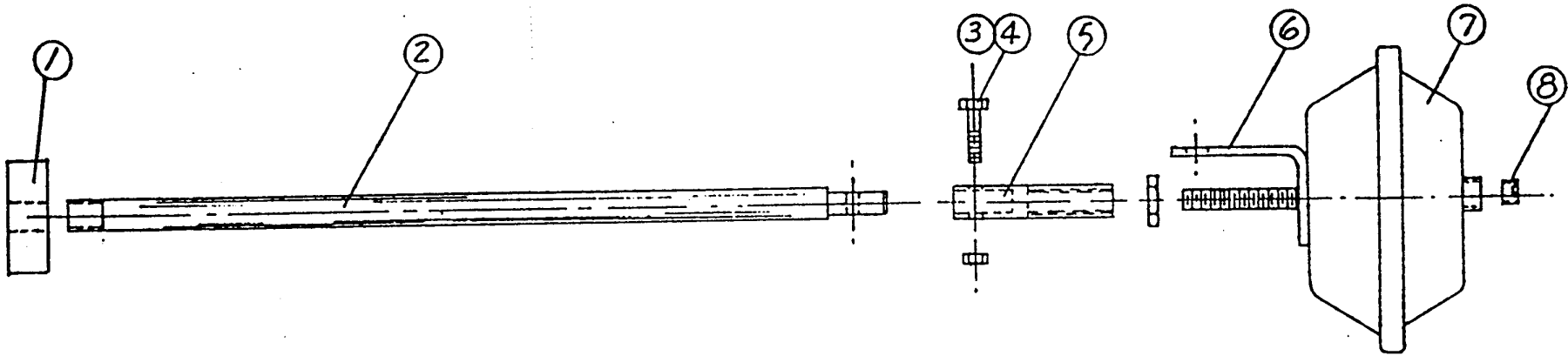
ITEM	QTY.	PART NO.	DESCRIPTION
20	2	660165	BRKT. SHOE, STEEL 41-3-09811 (S)
19	2	659876	FOOT & MTG. ANGLE
18	1	660019	5TH. WHEEL ASSM COMPLETE
17	1	659475	PIN, JAW 41-3-09916
16	1	659447	COTTER PIN 84232
15	1	659463	JAW, L.H. 41-4-09930
14	1	659464	COTTER 84261
13	1	659465	PIN, LEVER BAR 54-1-00766
12	1	659466	BAR, LEVER 41-3-0712
11	1	658439	LATCH 41-1-01250
10	1	659473	LATCH PIN 54-1-00711
9	1	659897	OPERATING ROD KIT 40-1-00218
8	1	659474	LOCK SPRING 12-1-00706
7	2	659503	POLY PAD 41-1-00111 (LT,SII)
6	2	659470	RUBBER PAD, O.S 41-1-00746 (S)
5	2	659454	RUBBER PAD STD. 41-1-00707 (S)
4	2	658440	PIVOT PIN 54-1-00705
3	2	659462	COTTER 99-0-00169
2	2	659942	POLY SHOE,41-3-00328 (LT,SII)
1	1	659476	LOCK 41-4-09931

SIMPLEX 5TH WHEELS

KWIK LOC

3

SIZE	FSCM NO	DWG NO	REV
SCALE	1 : 1	G30012	SHEET 1 OF 1



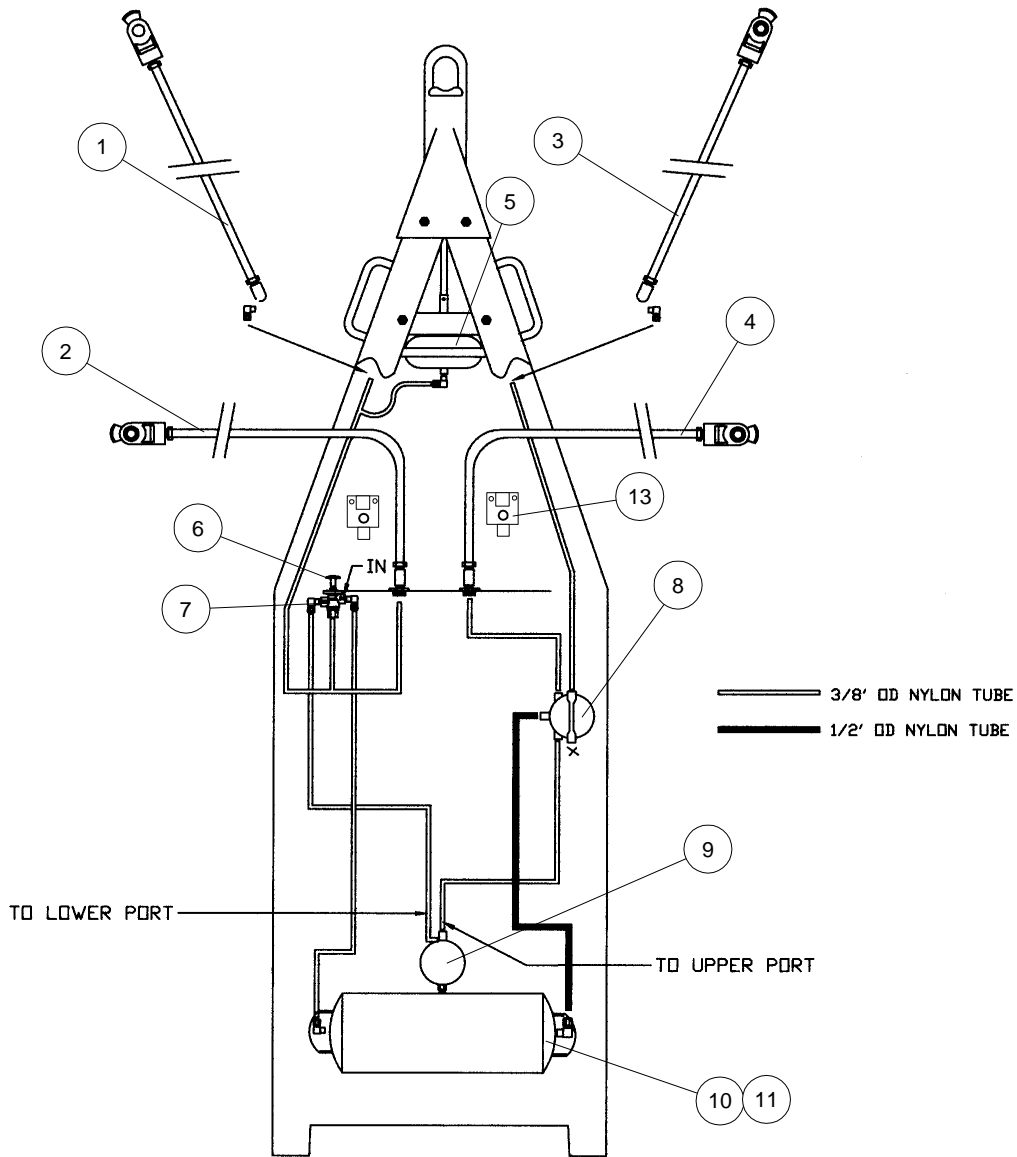
ITEM	QTY.	PART NO.	DESCRIPTION
8	1	70031-516	FLUSH PLUG, ALLEN HEAD
7	1	535417	AIR CHAMBER
6	1	658333	MOUNTING BRACKET
5	1	657547	COUPLING
4	1	81420-04	1/4-20 LOCK NUT
3	1	81420-24	1/4-20 X 1 1/2 BOLT GR5
2	1	659886	SHAFT
1	1	602517	SHOE

ASSEMBLY, AIR ACTUATED EYE, KWIK LOC

KWIK LOC

4

SIZE	FSCM NO	DWG NO	REV
		658037	
SCALE	1/32 : 1	SHEET	1 OF 1

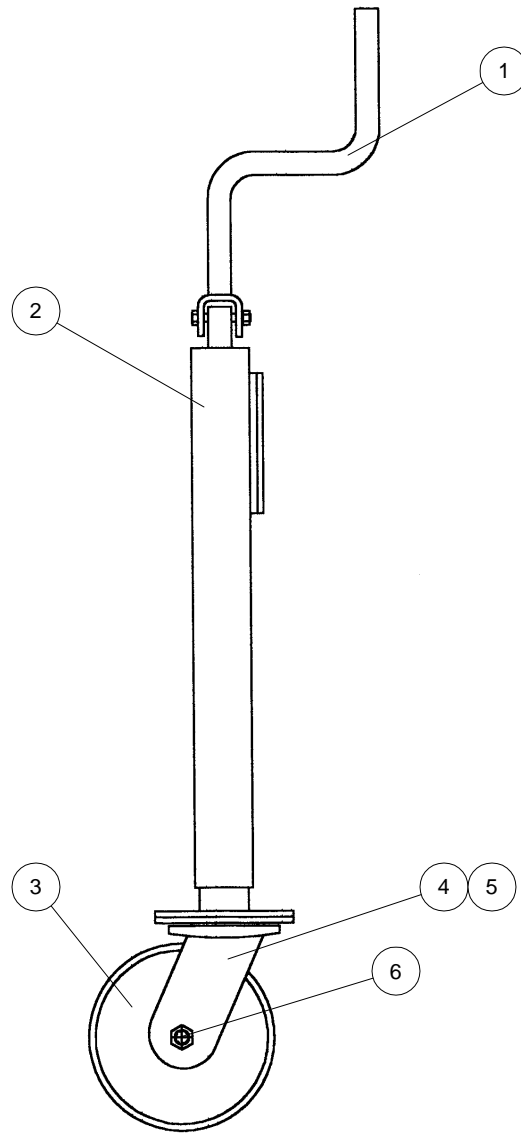


ITEM	QTY.	PART NO.	DESCRIPTION
14	1	658333	BRACKET, HOSE & AC
13	2	658359	DUMMY GLADHAND
11	1	473900	DRAIN VALVE
10	1	606517	AIR TANK, BOTTOM DRAIN
9	1	509117	RE-6 VALVE
8	1	660510	MINI-VALVE, BOOSTER
7	1	509217	BRAKE RELEASE VALVE
6	1	509211	KNOB KIT, B.R.V.
5	1	535417	AIR CHAMBER
4	1	660104	HOSE ASSM. 72" SERV.
3	1	660108	HOSE ASSM 48" SERV.
2	1	660105	HOSE ASSM. 72" EMR
1	1	660109	HOSE ASSM. 48" EMR

5

PLUMBING KWIK LOC

SIZE	FSCM NO	DWG NO	REV
SCALE	1 : 1	G30017	SHEET 1 OF 1



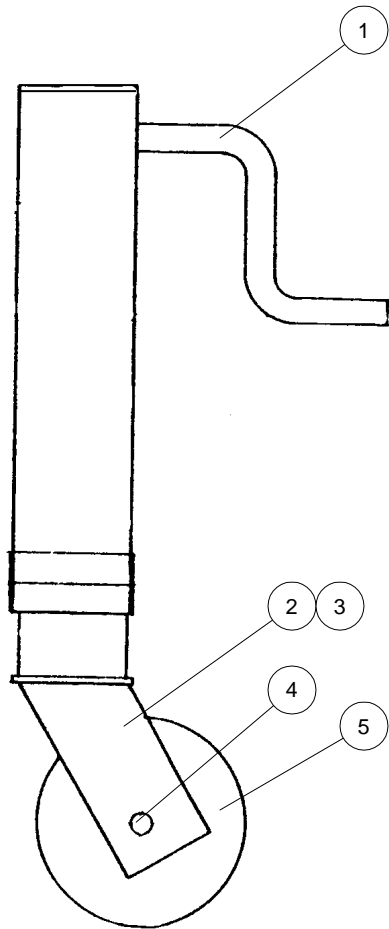
6

ITEM	QTY.	PART NO.	DESCRIPTION
1	1	660520	CRANK HANDLE
2	1	658361	CRANK LEG, COMPLETE, W/CASTOR
3	1	658371	6" WHEEL W/BUSHING
4	1	658362	6" CASTOR ASSM.
5	1	658370	6" CASTOR FORK ONLY
6	1	659531	AXLE & NUT

HOLLAND CRANK LEG

KWIK LOC CORP.

SIZE	FSCM NO	DWG NO	REV
		658361	
SCALE	1 : 1	SHEET	1 OF 1



THIS CRANK LEG IS OBSOLETE. ONLY THE ITEMS THAT ARE CALLED OUT ON THE DRAWING AT LEFT ARE AVAILABLE. FOR COMPLETE LEG REPLACEMENT PLEASE REFER TO PAGE 7.

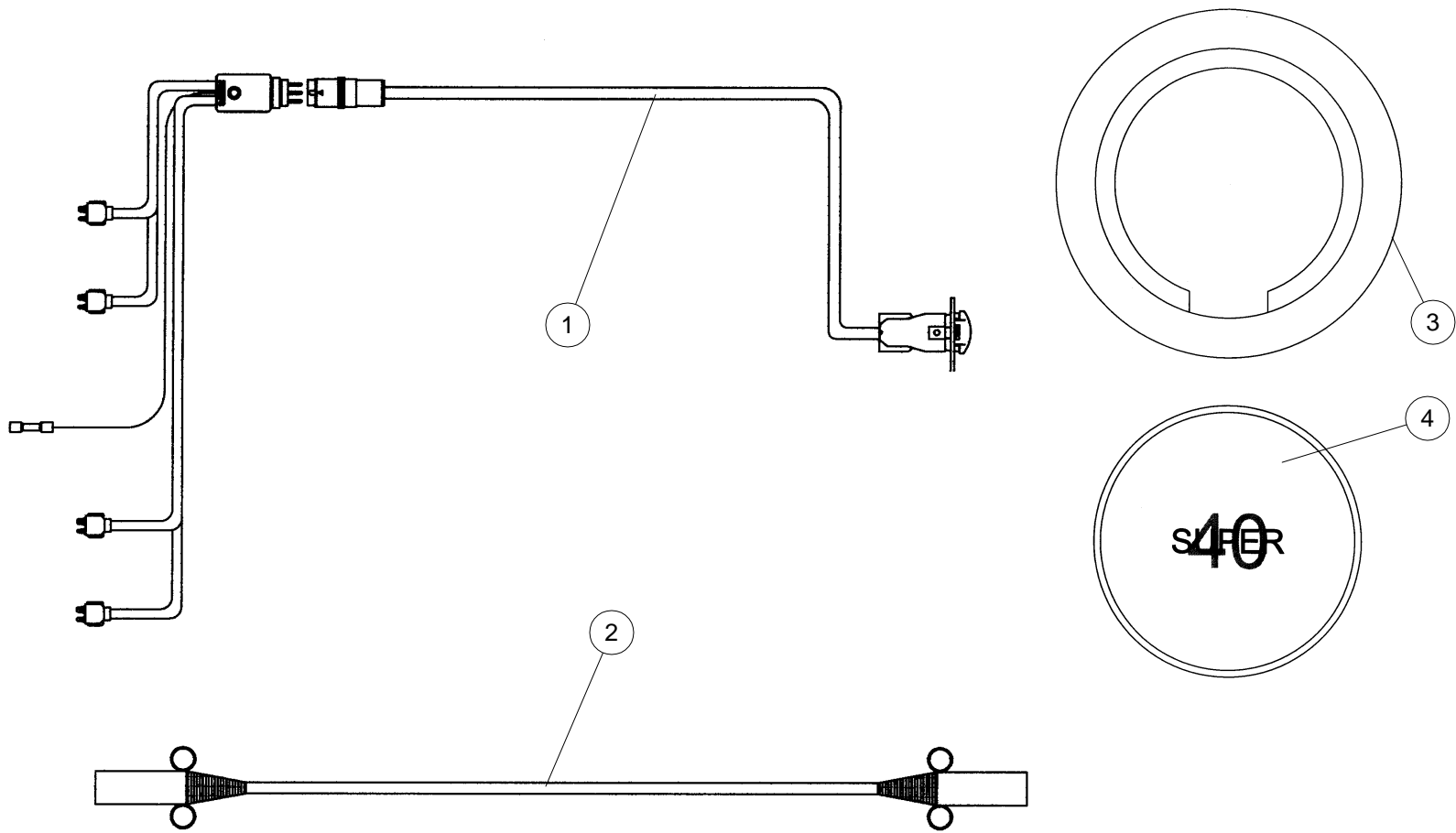
ITEM	QTY.	PART NO.	DESCRIPTION
1	1	660515	CRANK HANDLE
2	1	660516	8" CASTOR ASSM. COMPLETE
3	1	660519	CASTOR FORK ONLY
4	1	660518	AXLE & NUT
5	1	660517	8" WHEEL HD, INC SPANNER

7

KYSOR HD CRANK LEG (5" ROUND)

KWIK LOC CORP.

SIZE	FSCM NO	DWG NO	REV
SCALE	1 : 1	SHEET	1 OF 1



4	4	611317	LAMP, SUPER 40
3	4	612117	GROMMET, SUPER 40
2	2	659730	LIGHT CORD, STRAIGHT
1	1	658297	WIRING HARNESS

8

WIRING HARNESS			
KWIK LOC			
SIZE	FSCM NO	DWG NO	REV
SCALE	1 : 1	G30020	SHEET 1 OF 1

NUTS AND BOLTS

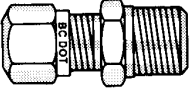
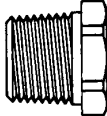
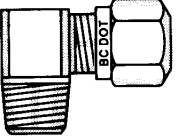
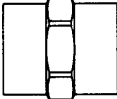
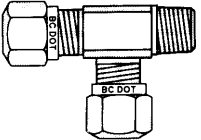
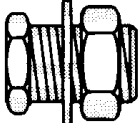
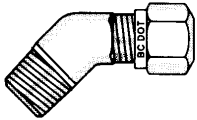
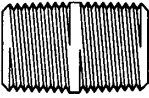
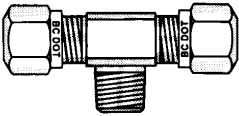
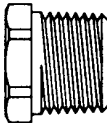
PLEASE SPECIFY GRADE (GR5 OR GR8)

	¾" L	1" L	1 ¼" L	1 ½" L	1 ¾" L	2" L	2 ¼" L	2 ½" L	2 ¾" L	
¼-20	81420-12	81420-16	81420-20	81420-24	81420-28	81420-32	81420-36	81420-40		¼-20
5/16-18	851618-12	851618-16	851618-20	851618-24	851618-28	851618-32	851618-36	851618-40		5/16-18
3/8-16	83816-12	83816-16	83816-20	83816-24	83816-28	83816-32	83816-36	83816-40	83816-44	3/8-16
½-13		81213-16	81213-20	81213-24	81213-28	81213-32	81213-36	81213-40	81213-44	½-13
½-20										½-20
5/8-11			85811-20	85811-24	85811-28	85811-32	85811-36	85811-40	85811-44	5/8-11
¾-10				83410-24	83410-28	83410-32	83410-36	83410-40	83410-44	¾-10
¾-16										¾-16
7/8-9					8789-28					7/8-9
1-8								818-40		1-8

	3 ½" L	4 ½"	5"	HEX NUT	LOCK NUT	FLANGE LOCK NUT	SPLIT LOCK WASHER	SAE FLAT WASHER	
¼-20					81420-03			81400-02	¼-20
5/16-18		851618-72			851618-04			85160-02	5/16-18
3/8-16				83816-01	83816-04		83800-03	83800-02	3/8-16
½-13		81213-72		81213-01	81213-03		81200-03	81200-02	½-13
½-20							81200-03	81200-02	½-20
5/8-11					85811-03	85811-04		85800-02	5/8-11
¾-10						83410-04			¾-10
¾-16				83416-01					¾-16
7/8-9					87809-04				7/8-9
1-8	818-56		818-80	81008-01	81008-04			81000-02	1-8

9

FASTENERS			
KWIK LOC			
SIZE	FSCM NO	DWG NO	REV
SCALE	1 : 1	SHEET	1 OF 1

TUBE SIZE		3/8"	1/2"	5/8"	REDUCER	SIZE	PART #	
	N P T	1/4"	70014-686	70014-6884		3/8"-1/4"	70032-2064	
		3/8"	70014-6866	70014-6868		70014-68106	1/2"-1/4"	70032-2084
		1/2"	70014-688	70014-6888		70014-6810	1/2"-3/8"	70032-2086
	N P T	1/4"	70014-696	70014-6984		3/4"-1/2"	70032-20128	
		3/8"	70014-6966	70014-698		70014-69106	1/2"	70033-008
		1/2"	70014-6968	70014-6988		70014-6910	3/4"	70033-0012
	N P T	1/4"	70014-716			SMALL	510017	
		3/8"	70014-71666			LARGE	508517	
							1/2"	70033-268
	N P T	1/4"	70014-806	70014-8084		3/4"	70033-2612	
		3/8"	70014-8066	70014-808		PLUG	1/8"	70031-522
		1/2"		70014-8088		70014-8010	1/4"	70031-524
	N P T	1/4"	70014-726	70014-72884		3/8"	70031-526	
		3/8"	70014-72666	70014-718		1/2"	70031-528	
					AIR FITTINGS			
					KWIK LOC			
		10			SIZE	FSCM NO	DWG NO	REV
					SCALE	1 : 1	G30015	SHEET 1 OF 1